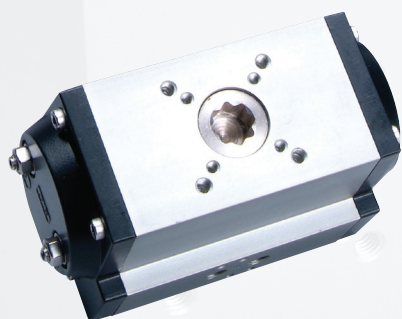


ALUMINUM PNEUMATIC ACTUATORS

Features & Specifications



THE NEW MT SERIES OFFERS A FLANGELESS DESIGN WHICH MAKES AUTOMATION EASY. THE MT SERIES ALSO OFFERS TWO ISO BOLT CIRCLES AS A STANDARD WHICH ELIMINATES THE NEED FOR THE FLANGE THUS PREVENTING CORROSION.

- » Compact design utilizes the same body for double acting and spring return units.
- » Utilizing NAMUR VDI/VDE 3845 and ISO 5211 dimensions
- » Standard 90° rotation, with optional 120°, 135°, 150°, and 180°
- » Female pinion drive standard, with optional drives to meet specific application requirements
- » Ideal for high cycle applications
- » Rugged tooth design allowing for manual override
- » High visibility position indication
- » High cycle life wear pads serves as both guide and wear bearings
- » Epoxy coated spring cartridges are pre-loaded for safety
- » Alternative operating media includes air, water, nitrogen and compatible hydraulic fluids
- » Stainless steel fasteners
- » Honed bore for high cycle life
- » Full traceability of all component parts
- » Factory pressure and leak tested and boxed individually
- » Wide range of adapters and accessories available
- » Hard anodized body standard



MT Series actuators have replaced the older UT series with mounting plate, however, sizes 51 and larger are still available with changeable mounting plate.



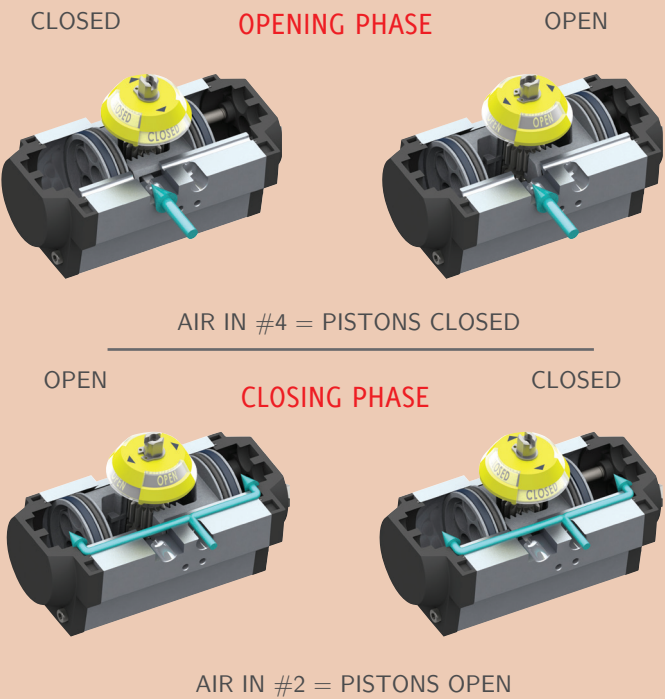
MT/UT SERIES

Double Acting

SIZE	40 PSIG	60 PSIG	80 PSIG	100 PSIG	120 PSIG
MT04	38	56	75	94	113
MT12	62	94	125	156	187
MT16	137	206	275	344	412
MT17	180	270	360	450	540
MT21	250	375	500	625	750
MT26	375	562	750	937	1125
MT31	500	750	1000	1250	1500
MT36	800	1200	1600	2000	2400
MT41	1000	1500	2000	2500	3000
MT46	1562	2344	3125	3906	4687
MT/UT51	2250	3375	4500	5625	6750
MT/UT56	3000	4500	6000	7500	9000
MT/UT61	4550	6825	9100	11375	13650
MT/UT66	6000	9000	12000	15000	18000
MT/UT71	11750	17625	23500	29375	35250
MT/UT76	15750	23625	31500	39375	47250

Large sized actuators are still supplied with interchangeable mounting flange.

DOUBLE ACTING



SPRING RETURN

