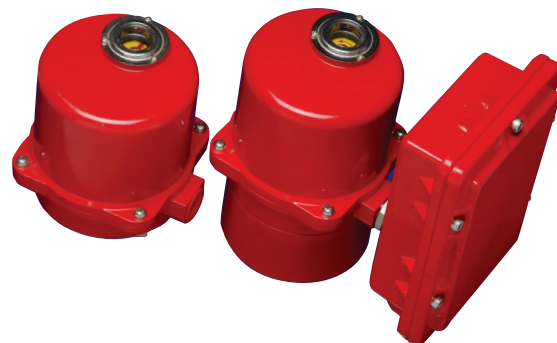


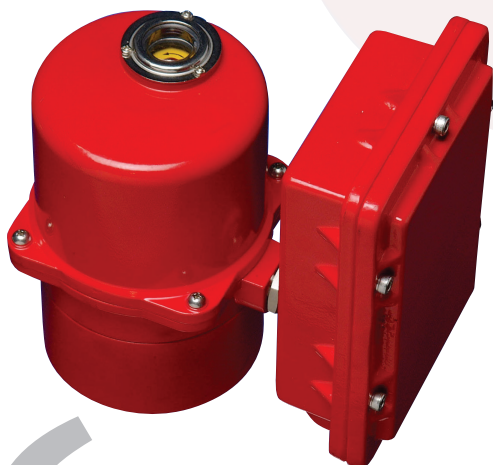
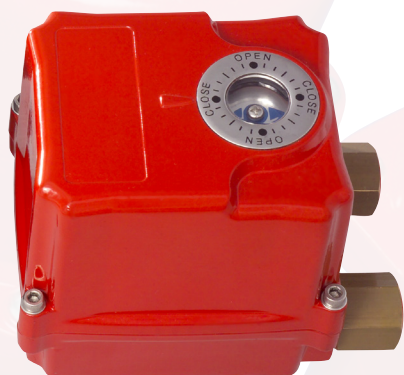
ELECTRIC ACTUATORS ETI 300-1950 SERIES

TRU-FLO'S LINE OF ELECTRIC ACTUATORS OFFERS A BROAD RANGE OF TORQUES FROM 300 TO 30,000 IN-LBS AND NUMEROUS FEATURES INCLUDING MANUAL OVERRIDES, AUXILIARY SWITCHES, 4-20mA MODULATING CONTROL, SEVERAL VOLTAGE OPTIONS; 1-PHASE 24/120V/220V AND 12 OR 24VDC, 3-PHASE 220V, 380V, AND 400V. THE UNITS FEATURE EPI-CYCLICAL GEAR TRAINS AND A UNIQUE MANUAL OVERRIDE WITH HAND WHEEL.



Features & Specifications

- » Die cast aluminum enclosure
- » Corrosion resistant NEMA 4/4x construction
- » Utilizing ISO 5211 mounting patterns
- » Optional servo card for modulating service; 4-20mA, 1-5mA, 1-5VDC, 0-10VDC, command signal potentiometer inputs with optional 4-20mA transmitter
- » CSA and CE approved
- » Self-locking gear train-no brake required
- » Visual position indication
- » Working temperature of -14°F-160°F
- » Stainless steel fasteners
- » Manual override with hand wheel standard on most models
- » Standard two auxiliary limit switch



Nº AN985455101



Nº 211860

56