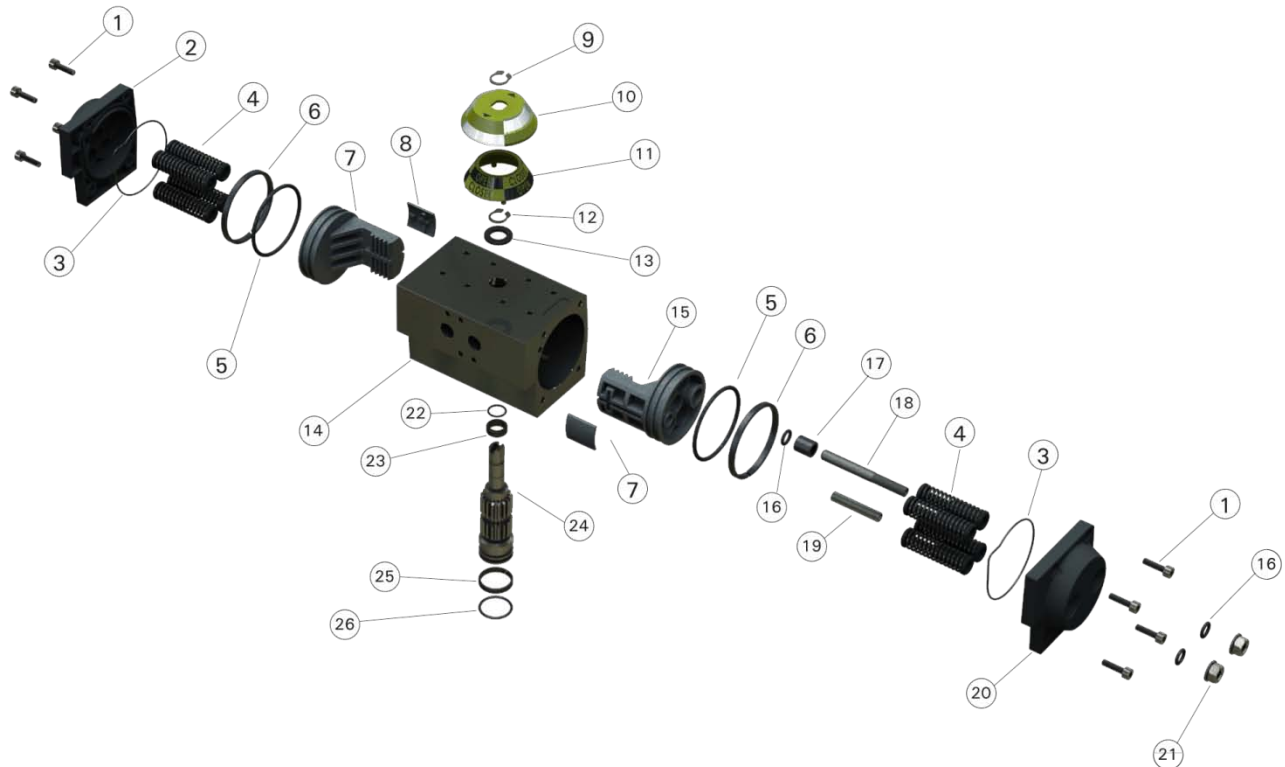


MADE BY QSM

864.605.0150  
 www.tru-flo.com  
 sales@tru-flo.com

# MT ACTUATOR

## REPLACEMENT PART IDENTIFICATION



Item	Description	Materials	Item	Description	Materials
1	End Cap Bolts	AISI 304 Stainless Steel	14	Actuator Body	Extruded Aluminum (6063 or 6005)
2	Left End Cap	Die Cast Aluminum Epoxy Coated	15	Right Piston	Die Cast Aluminum Epoxy Coated
3	End Cap O-Ring	BUNA-N	16	Travel Stop O-Ring	BUNA-N
4	Spring Cartridge	Spring Steel Epoxy Coated	17	O-Ring Retainer	Technopolymer
5	Piston O-Ring	BUNA-N	18	Closed Travel Stop	AISI 304 Stainless Steel
6	Piston Wear Bearing	Technopolymer	19	Open Travel Stop	AISI 304 Stainless Steel
7	Left Piston	Die Cast Aluminum Epoxy Coated	20	Right End Cap	Die Cast Aluminum Epoxy Coated
8	Piston Skate	Technopolymer	21	Travel Stop Nuts	AISI 304 Stainless Steel
9	Indicator Snap Ring	AISI 304 Stainless Steel	22	Upper Pinion O-Ring	BUNA-N
10	Indicator Window	Technopolymer	23	Upper Pinion Bearing	Technopolymer
11	Indicator	Technopolymer	24	Pinion	Nickel Plated Carbon Steel
12	Pinion Snap Ring	AISI 304 Stainless Steel	25	Lower Pinion Bearing	Technopolymer
13	Upper Pinion Washer	Technopolymer	26	Lower Pinion O-Ring	BUNA-N