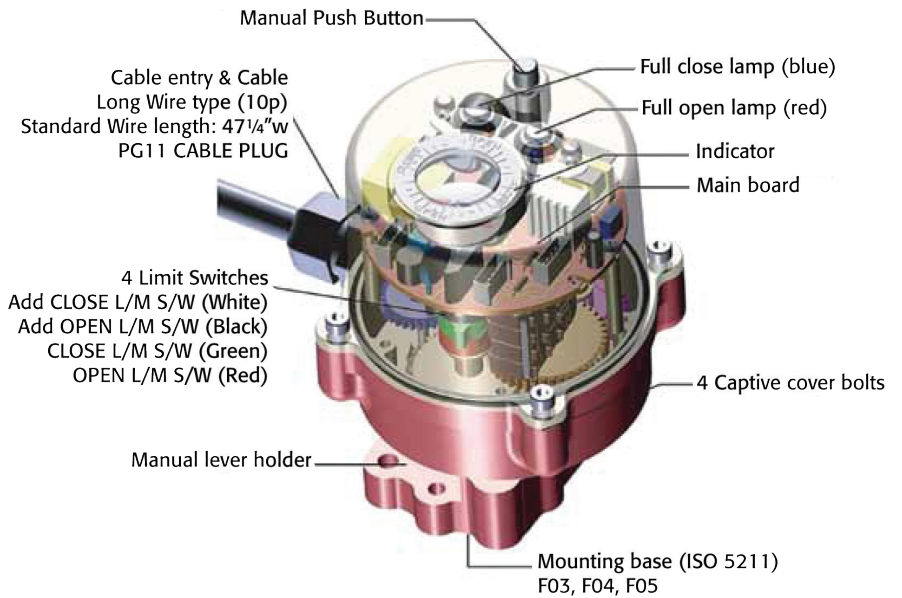
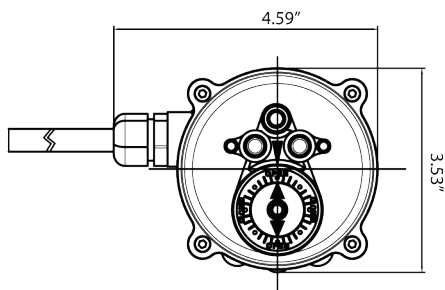
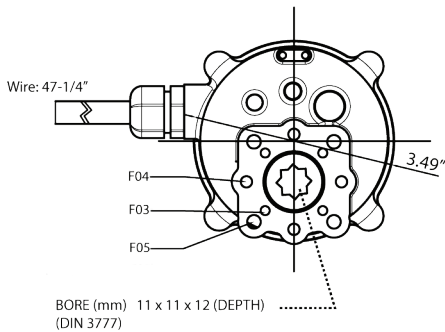
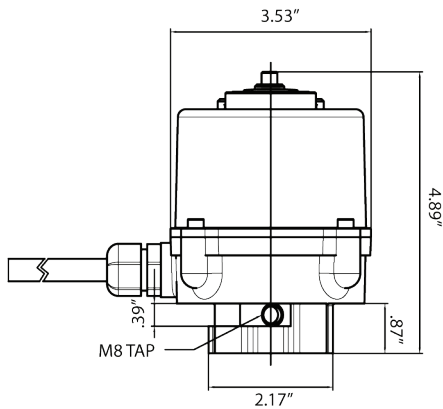


WE-350 & WE-500 SERIES

THE WE-350 SERIES ELECTRIC ACTUATOR IS SPECIFICALLY DESIGNED TO OPERATE SMALL SIZE BALL VALVES (1" AND LESS), DAMPERS, AND OTHER QUARTER-TURN DEVICES.

Features & Specifications

- » Compact and lightweight
- » High resistance to corrosion due to hard anodizing on inside and outside with polyester powder coating on external surface
- » Multi-voltage (AC85-265V/1PH, 24VDC)
- » Standard space heater
- » Weather proof (IP67) NEMA 4 & 6
- » Push button and manual lever
- » Wide, easy mounting base standard to ISO5211 (F03/F04/F05)
- » Standard four limit switches
- » Captive cover bolts
- » Mechanical position indicator & LED lamp indicators (Open/Close)



Type (Model)	Maximum Output Torque	Operating Time 60/50Hz	Mounting Size	Electric Motor Stop	Supplying Power & Rating Current (A) 60/50Hz, 1 Phase			Duty Cycle IEC34-1	Manual Level Angle	Weight
	in-lbs				110VAC	220VAC	24VDC			Lbs
WE-350	354	12 sec	F03, F04, F05	2A	0.120	0.060	0.460	S4	90°	2.65
WE-350HS	270	6.5 sec			0.065	0.033	0.250			